

Operating manual English

Revision	A
Date	20.09.2007
Created by	NH

This operating instruction is not subject to the updating

Self sealing coupling Low pressure Series

UF-series

optional features:
OV, SI, EX

Vor Beginn aller Arbeiten
Betriebsanleitung lesen!

*Read operating instruction
before beginning of all works!*

Betriebsanleitung immer
AUFBEWAHREN!
griffbereit am Gerät

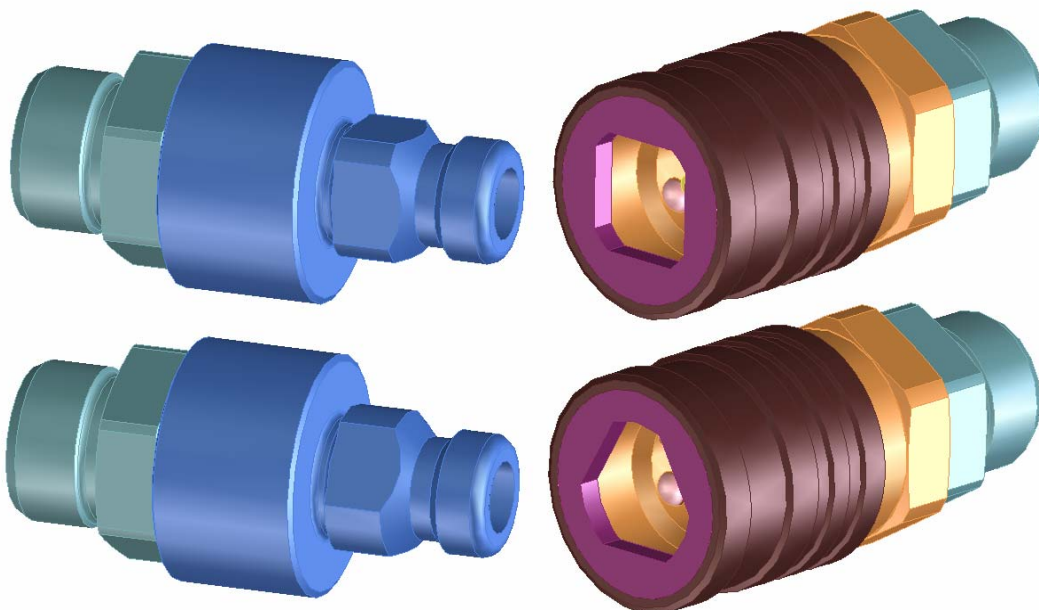
*Always KEEP operating
instruction! In a ready hand
way at the device*

Achtung: Vor Inbetriebnahme
Gerät auf mängelfreien Zustand
und technisch einwandfreie
Funktion kontrollieren.

*Caution: Before starting-up
check device on faultless
condition and technically
perfect function.*

Das Original ist die
deutsche Fassung

*The German version
is the original*



This coupling is a quality product, in which special attention has been paid to high functionality, ease of operation, safety and reliability. As an item of technical equipment this tool-changer is intended for use in the commercial, industrial area and for operators, who have been trained by specialists in the handling of technical systems / tools.

Customer care:

As part of our individual customer care we will be happy to assist you in questions relating to use and operation and on any problems encountered.

Service and maintenance:

In order to maintain the high technical performance capability and reliability of your docking system over many years, we recommend regular inspection and maintenance.

We can thereby offer you optimum support by our Customer Service department and the conclusion of a service and maintenance contract. Please ask for a quotation.

Carl Kurt Walther GmbH & Co. KG
PO Box 42 04 44
42781 Haan
Westfalenstraße 2

Tel.: +49 (0) 2129 567-0
Fax: +49 (0) 2129 567 450

E-Mail: info@walther-precision.de
Internet: www.walther-precision.de

Contact:

Application technology and service

Holger R. Figge
Telephone: (02129) 567-591
Telefax: (02129) 567-590
Handy: (0162) 2090100
e-mail: hfigge@walther-precision.de

Further addresses and telephone numbers of contacts can be found on the Internet on our homepage under www.walther-precision.de "Service / Customer service".

Table of Contents

1	<u>Table of Contents</u>	
1	TABLE OF CONTENTS	3
2	GENERAL	4
3	WARRANTY	5
4	SAFETY INSTRUCTIONS	6
5	PRODUCT DESCRIPTION OF THE COUPLING	7
5.1	INTENDED USE.....	7
5.2	TECHNICAL DATA	8
5.3	OPTIONAL FEATURES	8
5.4	EXTENDED PRODUCT DESCRIPTION FOR APPLICATION ACC. TO ATEX-GUIDE LINE 94/9/EG (SPECIAL DESIGN EX):.....	9
5.4.1	<i>General</i>	9
5.4.2	<i>Extended marking</i>	9
6	INSTALLATION MANUAL	10
6.1	GENERAL.....	10
6.2	EXTENDED INSTALLATION INSTRUCTION FOR APPLICATION ACC. TO ATEX-GUIDELINE 94/9/EG.....	10
6.2.1	<i>Details for safe operation</i>	10
6.2.2	<i>Details for safe installation</i>	10
6.2.3	<i>Details for a safe application area</i>	10
7	OPERATING MANUAL	11
7.1	CONNECTION PROCESS	11
7.2	DISCONNECTION PROCESS	11
7.3	SAFETY LOCKING DEVICE SI (SUPPLEMENTARY EQUIPMENT)	12
7.3.1	<i>Coupling process</i>	12
7.3.2	<i>Decoupling process</i>	12
8	MAINTENANCE AND FUNCTION TEST	13
8.1	MAINTENANCE AND FUNCTIONAL TEST	13
8.1.1	<i>Maintenance includes following items:</i>	13
8.1.2	<i>Functional test includes following items:</i>	13
9	LUBRICATION!	14
10	STORAGE	15
11	SHUT-DOWN	16
12	ORDERS NUMBER CODE	17
13	INDEX	18

2 General

This manual contains all regulations for operation, commissioning and maintenance of the locking coupling elementself sealing coupling elements.

All information and notes in this operating manual were collated while taking into consideration the valid regulations, the current engineering related status of development as well as our many years of experience and acquired knowledge.

Translations of this operating manual were also produced according to the best of knowledge. However, we cannot assume liability for any translation errors.

The German version provided for this operating manual is considered the authoritative version.

The actual scope of delivery can deviate from the explanations and graphic representations described herein under certain circumstances, e.g. in the case of special designs, utilization of additional order options or because of state-of-the-art technical alterations.

If you have any questions, please contact the manufacturer.



This operating manual must be read carefully before starting work on or with the equipment, in particular before commissioning!

The manufacturer assumes no liability for damage or faults arising from non-compliance with the instructions in this operating manual.

The operating manual must be kept directly with the equipment and be accessible to all persons who work on or with the equipment.

It is not permitted for the operating manual to be passed to third parties and if applicable this will incur damage compensation.

All other rights reserved.

Before commissioning the device must be checked for being not defective and its technically perfect function.

The German version is the original.

We reserve the right to make technical alterations to the product within the context of improving the usage properties and further development.

The operating manual remains our property.

Any reproduction, use by or communication to third parties incurs a penalty and will be pursued by court action (copyright law against unfair competition, BGB [German Civil Code]).

All rights reserved in the case of a patent award (Paragraph 7, Section. 1 of the patent law - PG) or entry as a patented design (Paragraph 5, Section 4 of the patented design law - GMG).

3 Warranty

The warranty conforms to:

the "General Conditions for Delivery and Capacity" of C.K. Walther GmbH & Co. KG of the state which was valid at the date of the purchase contract and

the regulations agreed in the purchase contract.

Wearing parts are generally excluded from the warranty.

Typical wearing parts of products from company C.K. Walther GmbH & Co. KG are for example:

- seals
- springs

Safety instructions

4 Safety instructions

Using these couplings does not release the customer from his obligation to comply with the pertinent work safety regulations e.g. operational safety regulations, etc. The duty to take due care by the operator of the couplings includes planning measures to ensure proper operation and monitoring their implementation.



Hazard notes

If the wrong product has been selected or if there is improper use or maintenance has been omitted, then hazards arise and personal injuries and material damage can occur from:

- hazardous emission of medium or individual particles/coupling parts.
- function impairments of connected systems or tools.
- the metal parts of coupling and adaptor are not thermally protected. In case of high media temperatures the contact with these parts can lead to combustion. According to the ambient temperature valve handle and ring grip can also become very hot. For that reason sufficiently long protective gloves must be worn in these cases.



The operator must in particular make sure that

- the couplings are only used according to the intended purpose.
- the couplings are only operated in a perfect, functioning condition.
- the operating manual is always in a legible condition and is available in its entirety to operating personnel.
- the operating personnel are sufficiently acquainted with the working method and the safety notes for the coupling.
- no safety devices must be removed and/or deactivated during operation of the couplings.
- before installing or dismantling the couplings, you have made sure that the couplings have not been pressurized.



After completing assembly and installation work and before commissioning the coupling, the following items have to be observed:

Check once again that all screw connections are securely fitted.

Before commissioning the couplings, a function test must be carried out (see maintenance and function test).

Product description of the coupling

5 Product description of the coupling

The coupling connection consists of:

Self sealing coupling	1-UF-006-0-.....-...-DR/VI
Self sealing adaptor	1-UF-006-2-.....-...-DR/VI
Self sealing coupling	1-UF-007-0-.....-...-DR/VI
Self sealing adaptor	1-UF-007-2-.....-...-DR/VI
Self sealing coupling	1-UF-012-0-.....-...-DR/VI
Self sealing adaptor	1-UF-012-2-.....-...-DR/VI
Self sealing coupling	1-UF-019-0-.....-...-DR/VI
Self sealing adaptor	1-UF-019-2-.....-...-DR/VI
Self sealing coupling	1-UF-032-0-.....-...-DR/VI
Self sealing adaptor	1-UF-032-2-.....-...-DR/VI

If the two coupling halves are not connected, both coupling halves, if necessary, should be protected against external contaminations and/or damages.

For this purpose the following dust caps and dust plugs are available.

Possible combinations:

clean-break-coupling	1-UF-...-0
with	
dust plug	1-UF-...-6
clean-break-adaptor	1-UF-...-2
with	
dust cap	1-UF-...-5

5.1 Intended use

- The coupling is only used to connect two lines.
The coupling is used primarily at the supply side or receiver side (fixed half).
The adaptor is used primarily at the hose side (free half).
- The connection and disconnection process is carried out by hand.
- The coupling is suitable especially for following media/fields of application:
 - air
 - water
 - hydraulic oil
 - and their subspecies
 - (such as oxygen or oil with additives)
- For all other possible media Walther Präzision should be consulted.

Product description of the coupling

5.2 Technical Data

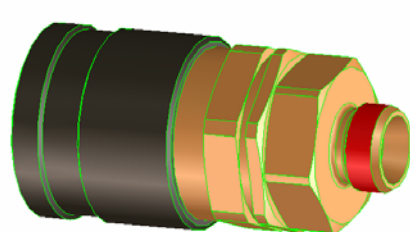
- The working pressures for the self sealing coupling element depend on the component materials.
- When determining the working pressures with standardized threaded connections, the highest permissible working pressure of the connection must be taken into consideration.

Type	P _{max.zul.} (stat.) (bar)		Cv- value	
	brass	Stainless steel	both sides self sealing	one side self sealing
UF-006	40	40	0,73	1,0
UF-007	40	40	0,95	1,25
UF-012	30	30	3,25	4,34
UF-019	30	30	7,5	11,2
UF-032	30	30	23,8	29,4

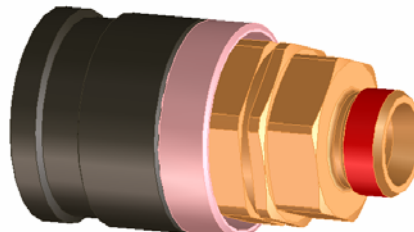
- The self sealing coupling element is not determined for any types of use other than those listed here.
- Safe operation is not guaranteed if the self sealing coupling element is used contrary to its intended use.
- The operator of the self sealing coupling element is responsible for all personal injuries or material damage that occur from non-intended use and disregard of the technical values; the manufacturer assumes no responsibility in these cases.

5.3 Optional Features

- OV = without valve (z.B.: 1-UF-006-0-.....-OV
1-UF-006-2-.....-OV)
- SI = with protection by safety locking device (see point 7)
(z.B.: 1-UF-006-0-.....-SI)



without SI



with SI

- EX = ATEX – version

Product description of the coupling

5.4 Extended product description for application acc. to ATEX-guide line 94/9/EG (special design EX):

5.4.1 General

Only non-sparkling materials may be used.

Non-sparkling materials are 1.4404, 1.4571 or equivalent materials.

Furthermore brass with different surfaces (f. ex. chrome-plated, nickel-plated).

Further on it must be assured that the seal is resistant against and suitable for the flowing through media. Also the temperature resistance of the seals must be guaranteed. This must also be considered for the marking acc. to chapter 5.5.2.

5.4.2 Extended marking

The coupling fittings are marked with



As the surface temperature of the self-sealing couplings are determined by the temperature of the fluids, the temperature category or the highest surface temperature must be specified by the operator while the safe temperature distances acc. to EN 13463-1 must be observed and the maximum temperature resistance of the coupling materials and seals are taken into consideration.

The marking of the temperature class must be effected readily visible by the operator.

The determination of the temperature class must be made acc. to the following table:

Max. temperature of fluids	Temperature class
75	T6
90	T5
130	T4
195	T3
295	T2
445	T1

The couplings are not admitted for the temperature classes T1 and T2 and may not be marked for that by the operator.

6 Installation manual

6.1 General

The coupling is to be integrated into the line network while taking into account the general accident prevention guidelines so that:

- perfect operation is guaranteed in accordance with the operating manual.
- the coupling is used primarily on the supply side or receiver side (fixed half) and the adaptor primarily at the hose side (free half)
- external damage to the unit and all mobile parts is excluded.

Before installing the coupling in a pipeline network, make sure that the pipeline network has been sufficiently rinsed/blown through and/or cleaned.



After completing the assembly work, a function test must be carried out according to the operating manual, both in depressurized state and under working pressure.

6.2 Extended installation instruction for application acc. to ATEX-guideline 94/9/EG

6.2.1 Details for safe operation

For the use of self sealing couplings as a hose connection it must be guaranteed that in case of pressure strikes the tumbling of the self sealing coupling can be avoided by fixing at suitable constructions. In principle it must be observed that the self sealing coupling cannot strike on hard objects which could produce strike sparks when touching the housing.

6.2.2 Details for safe installation

The self sealing couplings may only be connected to pipe- and hose systems which are suitable for electrostatic discharge and which are connected to the ground potential.

6.2.3 Details for a safe application area

The self sealing couplings may be used according to the class of devices² in areas susceptible to explosions where potentially explosive mixtures of gas, steam, mist and air are available.

7 Operating manual

In order to avoid critical injuries of the staff and damage at the self sealing coupling during operation, coupling may be only used for the stated applications.

7.1 Connection process

Before every couple cycle a visual check of coupling and adaptor is to be carried out. In case of recognizable, visible damage or deformations damaged parts are to be exchanged.

Hold self sealing coupling firmly in one hand; with the other hand pull back locking sleeve. This has to be done against locking spring resistance.

Push free half (coupling) with withdrawn locking sleeve axially centered onto plug part of fixed half (adaptor) until sensible resistance.

Bring locking sleeve with support of locking spring into starting position.

Self sealing coupling and self sealing adaptor are now mechanically locked.



CAUTION

Please take care that locking sleeve is in final position, i.e. that it is flush in front with the coupling housing as otherwise no perfect lock is guaranteed.

7.2 Disconnection process

Withdraw locking sleeve against locking spring and take out coupling from self sealing adaptor.

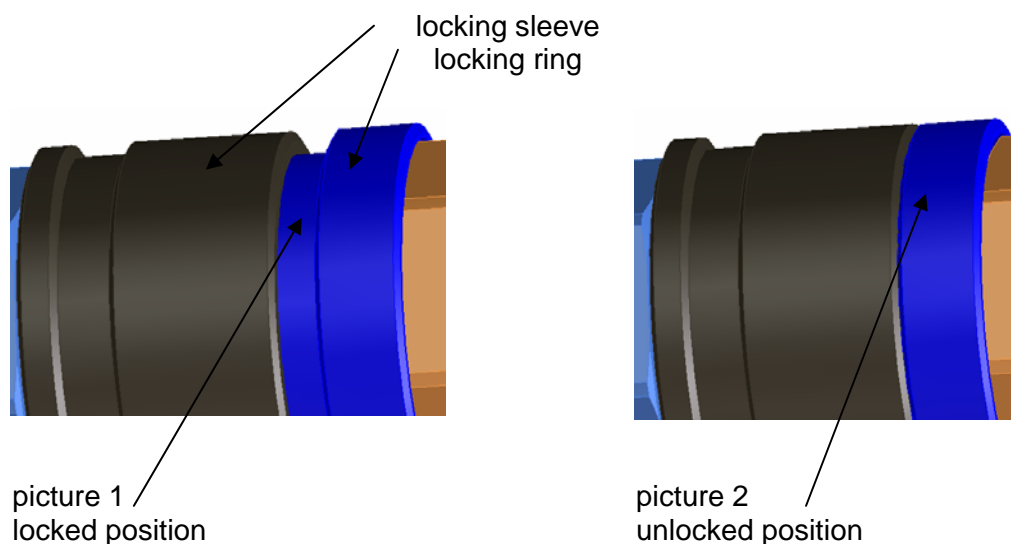
Caution!

In case of an available pressure in the line connected by the coupling system a strong separation impulse - depending on the pressure - can be effective onto the coupling system during disconnection. For that reason the movable part of the coupling (free half) is to be firmly held in the hand to avoid injuries.

7.3 Safety locking device SI (supplementary equipment)

7.3.1 Coupling process

For coupling the locking ring must be in unsecured position (picture 2).
Coupling as described under 7.1.



After coupling the locking ring is drawn towards the hose, turned by 90° and released. Now the locking ring snaps forward into the safety position (picture 1).
Both final positions – secured and unsecured – are fixed by spring loaded cams.

The operator can assure himself of the proper locking and saving by trying, as a control, to disconnect the coupling by drawing back the locking sleeve. This is not possible in secured position.

7.3.2 Decoupling process

In coupled situation the locking ring is in secured position (picture 1).
For de-blocking the locking ring is drawn towards the hose, turned by 90° and released. Now the locking ring snaps forward into the safety position (picture 1).
Both final positions – secured and unsecured – are fixed by spring loaded cams.
Decoupling as described under 7.2.

Maintenance and function test

8 Maintenance and function test

Preventive maintenance measures

WALTHER self sealing couplings are to be operated in such a manner that external damages to elements and all moving parts are avoided.

8.1 Maintenance and functional test

In order to always guarantee function of the self sealing coupling and hence safety of operator, a maintenance and functional testing must be made in appropriate periods of time depending on operating conditions.

In order to minimize operating forces and to extend service life of the self sealing coupling we recommend to slightly grease plug surfaces (see item 9.0).

8.1.1 Maintenance includes following items:

- A visual inspection of self sealing coupling and self sealing adaptor regarding damage and contamination has to be made.
- Dirt at the functional area (sealing area, operating elements) which is easily accessible from outside should be removed by simply wiping-off.

If there are damaged, torn or corroded parts, coupling must be dismantled and returned to manufacturer for repair.

If worn or embrittled seals are found or if there is extreme dirt, the customer can decide whether he returns coupling unit to the manufacturer's factory or whether he repairs himself.

8.1.2 Functional test includes following items:

As described in the operating instruction, coupling is several times connected, pressurized and then disconnected.

In doing so, the following has to be observed:

- Connection and disconnection process must be absolutely smooth.
- Coupling must be absolutely leak-proof in connected and disconnected state.

If there are damaged, torn or corroded parts, coupling must be dismantled and returned to manufacturer for repair.

If worn or embrittled seals are found or if there is extreme dirt, the customer can decide whether he returns the coupling unit to the manufacturer's factory or whether he repairs himself.

9 Lubrication!

We recommend lightly greasing the plug-in areas to minimize operating forces and to extend the service life of the coupling.

Do **not** lubricate with resinous greases.



Attention !

The choice of grease with regard to compatibility must agree with the seal quality and the medium (e.g.: oxygen).

The bearing roll (pos. 24) and the bearing bolt (pos. 25) must be greased slightly with roller bearing grease.

10 Storage

The couplings must be stored in such a way that no damage can occur to the couplings.

The storage conditions of the couplings depend on the guidelines applicable to the gaskets, since improper storage can lead to deterioration of the gaskets.

The following points must be observed:

- The couplings must be stored dry.
- For the preservation of the gaskets, the gaskets and couplings should not be stored where they are exposed to the effects of daylight.

For protection against oxygen, the gaskets and couplings should be stored in the original packaging.

11 Shut-down

At the end of the service life the coupling or its components have to be disposed non-polluting and according to the legal regulations.

For that the local public or private disposal societies should be taken.

12 Orders number code

1. 2. 3. 4. 5. 6. 7. 8. 9.
 X – X X - X X X – X – X X X X X – X X - X – X X X - X X
 X – X X - X X X – X – X X X X X – X X X X – X X X - X X

1. Subject group
2. Series
The information regarding the series comprises either two letters or two numbers.
3. Nominal size / nominal borewidth
It is rounded up or down to one. The information can be numerical as well as alphanumerical.
4. Product type or design type
5. Connection design
6. Material design:
xx-x and xxxx possible
7. Material design (seal design):
xx-x and xxxx possible
8. Y or Z design
9. Additional equipment

13 Index

A	
Accident prevention guidelines	10
According to intended purpose.....	6
Acquired knowledge.....	4
air.....	7
Alterations	4
Assembly	6
Assembly work.....	10
C	
Clean-Break-Kupplung	7
clean-break-adaptor	7
clean-break-coupling	7
Clean-Break-Nippel.....	7
Cleaned.....	10
Commissioning.....	4, 6
connected.....	13
Connection process	11
connections.....	6, 8
coupling	4
Coupling	6, 8, 10, 14, 16
Couplings	6
Customer care.....	2
D	
damage	6, 15
Damage.....	4, 6, 8, 10
Damage compensation	4
Daylight.....	15
Depressurized	10
Depressurized state.....	10
disconnected	13
Disconnection process.....	11
Dismantling	6
Disposal societies	16
dry.....	15
dust cap.....	7
dust plug.....	7
E	
elektrostatisch.....	10
Equipment	4
Experience	4
explosionsgefährdeten Bereichen.....	10
F	
Faults	4
Function.....	6
Function test.....	6, 10
Functionality	2
G	
General	4
Gerätekatgorie	10
guarantee	13
H	
Hazard notes.....	6
Hazardous emission	6
Hose side.....	10
hydraulic oil	7
I	
Implementation	6
Improvement	4
Inspection	2
Intended use	7
K	
Kennzeichnung.....	9
L	
Legible condition	6
Liability.....	4
M	
Maintenance	2, 4, 6
Manual	4
Medium	6
Mobile parts	10
O	
Operating manual.....	1, 10
Operation.....	2
Operational safety regulations.....	6
Operator	6, 8
Operators.....	2
Original	4
Oxygen.....	14
P	
Packaging.....	15
Perfect operation	10
Perfect, functioning condition.....	6
Performance capability.....	2
Pipeline network	10
Pressurized	6

Property	4	<i>T</i>	
<i>R</i>		Table of Contents	3
Regulations	4	Technical Data	8
Reliability	2	Technical equipment	2
<i>S</i>		Temperaturbeständigkeit.....	9
Safety.....	2	Temperaturklasse	9
Safety devices.....	6	Tools	2, 6
Schlagfunken.....	10	Translation errors	4
Scope of delivery.....	4	Types of use	8
Screw connections.....	6	<i>U</i>	
self sealing adaptor.....	11, 13	Use	2
self sealing coupling.....	11, 13	<i>V</i>	
Self sealing coupling	11	Version	4
service.....	13	<i>W</i>	
Service.....	2	water.....	7
Shut-down	16	Work safety regulations	6
Special designs	4	Working method	6
Specialists.....	2	Working pressure	8, 10
Status of development	4	Working pressures.....	8
Storage.....	15	Wrong product selection	6
Storage conditions	15		
subspecies.....	7		
Supply side	10		
Systems.....	2, 6		