

Operating Instruction English

Revision	C
Datum	25.09.2008
Ersteller	NH

This operating instruction is not subject to the updating

Self Sealing Coupling High Pressure Series

HP-series

optional features:

RV
OV
SI
GG
EX



Vor Beginn aller Arbeiten
Betriebsanleitung lesen!

*Read operating instruction
before beginning of all works!*

Betriebsanleitung immer
AUFBEWAHREN!
griffbereit am Gerät

*Always KEEP operating
instruction! In a ready hand
way at the device*

Achtung: Vor Inbetriebnahme
Gerät auf mängelfreien Zustand
und technisch einwandfreie
Funktion kontrollieren.

*Caution: Before starting-up
check device on faultless
condition and technically
perfect function.*

Das Original ist die
deutsche Fassung

*The German version
is the original*

This coupling is a quality product, in which special attention has been paid to high functionality, ease of operation, safety and reliability. As an item of technical equipment this tool-changer is intended for use in the commercial, industrial area and for operators, who have been trained by specialists in the handling of technical systems / tools.

Customer care:

As part of our individual customer care we will be happy to assist you in questions relating to use and operation and on any problems encountered.

Service and maintenance:

In order to maintain the high technical performance capability and reliability of your docking system over many years, we recommend regular inspection and maintenance.

We can thereby offer you optimum support by our Customer Service department and the conclusion of a service and maintenance contract.

Please ask for a quotation.

Carl Kurt Walther GmbH & Co. KG
PO Box 42 04 44
42781 Haan
Westfalenstraße 2
Tel.: +49 (0) 2129 567-0
Fax: +49 (0) 2129 567 450
E-Mail: info@walther-praezision.de
Internet: www.walther-praezision.de

Contact:

Application technology and service

Holger R. Figge
Telephone: (02129) 567-591
Telefax: (02129) 567-590
Handy: (0162) 2090100
e-mail: hfigge@walther-praezision.de

Further addresses and telephone numbers of contacts can be found on the Internet on our homepage under www.walther-praezision.de "Service / Customer service".

List of Contents

1	<u>List of Contents</u>	
1	LIST OF CONTENTS	3
2	GENERAL.....	4
3	WARRANTY.....	5
4	SAFETY INSTRUCTION.....	6
5	PRODUCT DESCRIPTION OF THE SELF SEALING COUPLING	7
5.1	USAGE ACCORDING TO SPECIFICATION.....	7
5.2	TECHNICAL DATA	8
5.3	OPTIONAL FEATURES	9
5.4	EXTENDED PRODUCT DESCRIPTION FOR APPLICATION ACC. TO ATEX-GUIDE LINE 94/9/EG (SPECIAL DESIGN EX):.....	10
5.4.1	<i>General.....</i>	<i>10</i>
5.4.2	<i>Extended marking.....</i>	<i>10</i>
6	INSTALLATION INSTRUCTION	11
6.1	GENERAL.....	11
6.2	EXTENDED INSTALLATION INSTRUCTION FOR APPLICATION ACC. TO ATEX-GUIDELINE 94/9/EG.....	11
6.2.1	<i>Details for safe operation.....</i>	<i>11</i>
6.2.2	<i>Details for safe installation.....</i>	<i>11</i>
6.2.3	<i>Details for a safe application area.....</i>	<i>11</i>
7	OPERATING INSTRUCTION.....	12
7.1	CONNECTION PROCESS	12
7.2	DISCONNECTION PROCESS	12
7.3	SAFETY LOCKING DEVICE SI (SUPPLEMENTARY EQUIPMENT)	13
7.3.1	<i>Coupling process.....</i>	<i>13</i>
7.3.2	<i>Decoupling process.....</i>	<i>13</i>
8	MAINTENANCE INSTRUCTION	14
8.1	MAINTENANCE AND FUNCTIONAL TEST	14
8.1.1	<i>Maintenance includes following items:</i>	<i>14</i>
8.1.2	<i>Functional test includes following items:.....</i>	<i>14</i>
9	LUBRICATION !.....	15
10	STORAGE.....	16
11	SHUT-DOWN	17
12	ORDER NUMBER CODE.....	18
13	INDEX	19

2 General

This manual contains all regulations for operation, commissioning and maintenance of the locking coupling elementcoupling.

All information and notes in this operating manual were collated while taking into consideration the valid regulations, the current engineering related status of development as well as our many years of experience and acquired knowledge.

Translations of this operating manual were also produced according to the best of knowledge. However, we cannot assume liability for any translation errors.

The German version provided for this operating manual is considered the authoritative version.

The actual scope of delivery can deviate from the explanations and graphic representations described herein under certain circumstances, e.g. in the case of special designs, utilization of additional order options or because of state-of-the-art technical alterations.

If you have any questions, please contact the manufacturer.



This operating manual must be read carefully before starting work on or with the equipment, in particular before commissioning!

The manufacturer assumes no liability for damage or faults arising from non-compliance with the instructions in this operating manual.

The operating manual must be kept directly with the equipment and be accessible to all persons who work on or with the equipment.

It is not permitted for the operating manual to be passed to third parties and if applicable this will incur damage compensation.

All other rights reserved.

Before commissioning the device must be checked for being not defective and its technically perfect function.

The German version is the original.

We reserve the right to make technical alterations to the product within the context of improving the usage properties and further development.

The operating manual remains our property.

Any reproduction, use by or communication to third parties incurs a penalty and will be pursued by court action (copyright law against unfair competition, BGB [German Civil Code]).

All rights reserved in the case of a patent award (Paragraph 7, Section. 1 of the patent law - PG) or entry as a patented design (Paragraph 5, Section 4 of the patented design law - GMG).

3 Warranty

The warranty conforms to:

the regulations agreed in the purchase contract and
the “General Conditions for Delivery and Capacity” of C.K. Walther GmbH & Co. KG
of the state which was valid at the date of the purchase contract.

Wearing parts are generally excluded from the warranty.
Typical wearing parts of products from company C.K. Walther GmbH & Co. KG
are for example:

- seals
- springs

Safety Instruction

4 Safety Instruction

Using these couplings does not release the customer from his obligation to comply with the pertinent work safety regulations e.g. operational safety ordinances, etc. The duty to take due care by the operator of the couplings includes planning measures to ensure proper operation and monitoring their implementation.


 Hazard notes

If the wrong product has been selected or if there is improper use or maintenance has been omitted, then hazards arise and personal injuries and material damage can occur from:

- Hazardous emission of fluid or individual particles/coupling parts
- Function impairments of connected systems or tools
- The metal parts of coupling and adaptor are not thermally protected. You can be burned if you touch these parts at high media temperatures. According to the ambient temperature valve lever and ring grip can also become unbearably hot. For that reason suitable, sufficiently long protective gloves should be worn.

 The operator must in particular make sure that

- The couplings are only used according to the intended purpose.
- The couplings are only operated in a perfect, functioning condition.
- The operating manual is always in a legible condition and is available in its entirety to operating personnel.
- The operating personnel are sufficiently acquainted with the working method and the safety notes for the coupling.
- The coupling is sent to our factory for repair work.
- During operation of the coupling, no safety devices are removed and/or deactivated.
- Before installing or dismantling the coupling, you have made sure that the coupling has not been pressurized.

 After completing assembly and installation work and before commissioning the coupling, observe the following points:

Check once again that all screw connections are securely fitted.

Before commissioning the coupling, a function test must be carried out (see maintenance and function test).

Product description of the coupling

5 Product description of the self sealing coupling

- Coupling connection consists of:
 - self sealing coupling 1-HP-...-0
 - self sealing adaptor 1-HP-...-2

- The following combinations of the coupling connections are also possible:
 - self sealing coupling 1-HP-...-0
 - thru type adaptor 1-HP-...-1

 - thru type coupling 1-HP-...-4
 - thru type adaptor 1-HP-...-1

In case that both coupling halves are not connected they should be protected against external dirt and/or damages if required.

- For that purpose dust cap and dust plug are available.
Possible combinations :

self sealing coupling	1-HP-...-0
or	
thru type coupling	1-HP-...-4
with	
dust plug	1-HP-...-6
self sealing adaptor	1-HP-...-2
or	
thru type adaptor	1-HP-...-1
with	
dust cap	1-HP-...-5

5.1 Usage according to specification

- Coupling is only used as connection of two lines.
- Connection and disconnection process is carried out by hand.
- The self sealing coupling has a protection unintentional disconnection in case of vibrations.
- Coupling is especially suitable for the following media/applications:
 - air
 - hydraulic oil
 - and their subspecies
(such as oxygen or oil with additives)
- For all other possible applications, C.K. Walther should be consulted.

Product description of the coupling

5.2 Technical Data

- Working pressures of the coupling depend on materials of individual parts.
- When determining working pressure of the coupling the max. permissible working pressure of the end connection is to be taken into account if standardized threads are used.

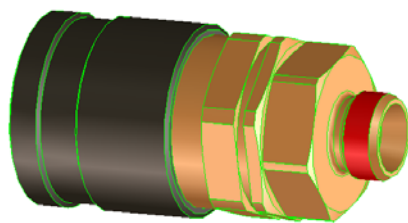
DN	Type	Stahl	P _{max,stat.} (stat.) [bar]		Berstdruck (Stahl) > [bar]	C _v -Wert	
			Edelstahl 1.4404/1.4571	Edelstahl 1.4404/1.4571 m. 1.4418 QT900		beidseitig absperrend	einseitig absperrend
4	HP-004	2000	500	1000	4000	0,24	0,4
6	HP-006	1000	320	650	2300	0,65	0,89
10	HP-010	600	300	470	2000	1,85	2,4
16	HP-016	500	250	450	1800	5,5	8,8
20	HP-020	400	180	350	1600	8,5	13,6
32	HP-032	300	180	250	1300	20	29
50	HP-050	200	-	-	1000	65	82

- The coupling is not determined for any types of use other than those listed here.
- Safe operation is not guaranteed if the coupling is used contrary to its intended use.
- The operator of the coupling is responsible for all personal injuries or material damage that occur from non-intended use and disregard of the technical values; the manufacturer assumes no responsibility in these cases.

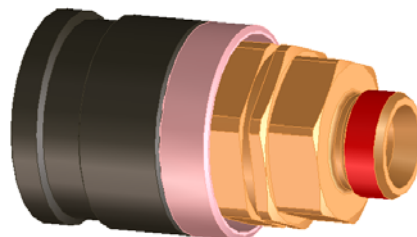
Product description of the coupling

5.3 Optional Features

- RV = with ring valve (z.B.: 1-HP-...-0-.....-RV
1-HP-...-2-.....-RV)
- OV = without valve (z.B.: 1-HP-...-0-.....-OV
1-HP-...-2-.....-OV)
- SI = with protection by safety locking device (see point 5)
(z.B.: 1- HP-...-0-.....-SI)



without SI



with SI

- GG = with ring grips (aluminium cast)
(z.B.: 1- HP-...-0-.....-GG)



- EX = ATEX – version

Product description of the coupling

5.4 Extended product description for application acc. to ATEX-guide line 94/9/EG (special design EX):

5.4.1 General

Only non-sparkling materials may be used.

Non-sparkling materials are 1.4404, 1.4571 or equivalent materials.

Furthermore brass with different surfaces (f. ex. chrome-plated, nickel-plated).

Further on it must be assured that the seal is resistant against and suitable for the flowing through media. Also the temperature resistance of the seals must be guaranteed. This must also be considered for the marking acc. to chapter 5.5.2.

5.4.2 Extended marking

The coupling fittings are marked with



As the surface temperature of the self-sealing couplings are determined by the temperature of the fluids, the temperature category or the highest surface temperature must be specified by the operator while the safe temperature distances acc. to EN 13463-1 must be observed and the maximum temperature resistance of the coupling materials and seals are taken into consideration.

The marking of the temperature class must be effected readily visible by the operator.

The determination of the temperature class must be made acc. to the following table:

Max. temperature of fluids	Temperature class
75	T6
90	T5
130	T4
195	T3
295	T2
445	T1

The couplings are not admitted for the temperature classes T1 and T2 and may not be marked for that by the operator.

Installation instruction

6 Installation Instruction

6.1 General

Subject to the general accident prevention regulations coupling is to be installed into a network in such a way that:

- a satisfactory operation is guaranteed according to the operating instruction .
- first of all self sealing coupling is used on line side and self sealing adaptor on consumer side.
- external damage of the unit as well as all moving parts are excluded .

Before self sealing coupling and the self sealing adaptor are installed at a pipeline network make sure that the pipeline network is sufficiently rinsed/blown out and/or cleaned.



After the assembly works are finished a functional test is to be carried out with both, without pressure and under working pressure according to operating instruction.

6.2 Extended installation instruction for application acc. to ATEX-guideline 94/9/EG

6.2.1 Details for safe operation

For the use of self sealing couplings as a hose connection it must be guaranteed that in case of pressure strikes the tumbling of the self sealing coupling can be avoided by fixing at suitable constructions. In principle it must be observed that the self sealing coupling cannot strike on hard objects which could produce strike sparks when touching the housing.

6.2.2 Details for safe installation

The self sealing couplings may only be connected to pipe- and hose systems which are suitable for electrostatic discharge and which are connected to the ground potential.

6.2.3 Details for a safe application area

The self sealing couplings may be used according to the class of devices² in areas susceptible to explosions where potentially explosive mixtures of gas, steam, mist and air are available.

Operating Instruction

7 Operating Instruction

In order to avoid critical injuries of the staff and damage at the self sealing coupling during operation, coupling may be only used for the stated applications.

7.1 Connection process

Before every couple cycle a visual check of coupling and adaptor is to be carried out. In case of recognizable, visible damage or deformations damaged parts are to be exchanged.

Hold self sealing coupling firmly in one hand; with the other hand pull back locking sleeve. This has to be done against locking spring resistance.

Push coupling (free half) with withdrawn locking sleeve axially centered onto plug part of adaptor (fixed half) until sensible resistance.

Bring locking sleeve with support of locking spring into starting position.

Self sealing coupling and self sealing adaptor are now mechanically locked.

CAUTION



Please take care that locking sleeve is in final position, i.e. that it is flush in front with the coupling housing as otherwise no perfect lock is guaranteed.

7.2 Disconnection process

Withdraw locking sleeve against locking spring and take out coupling from self sealing adaptor.

Caution!

In case of an available pressure in the line connected by the coupling system a strong separation impulse - depending on the pressure - can be effective onto the coupling system during disconnection. For that reason the movable part of the coupling (free half) is to be firmly held in the hand to avoid injuries.

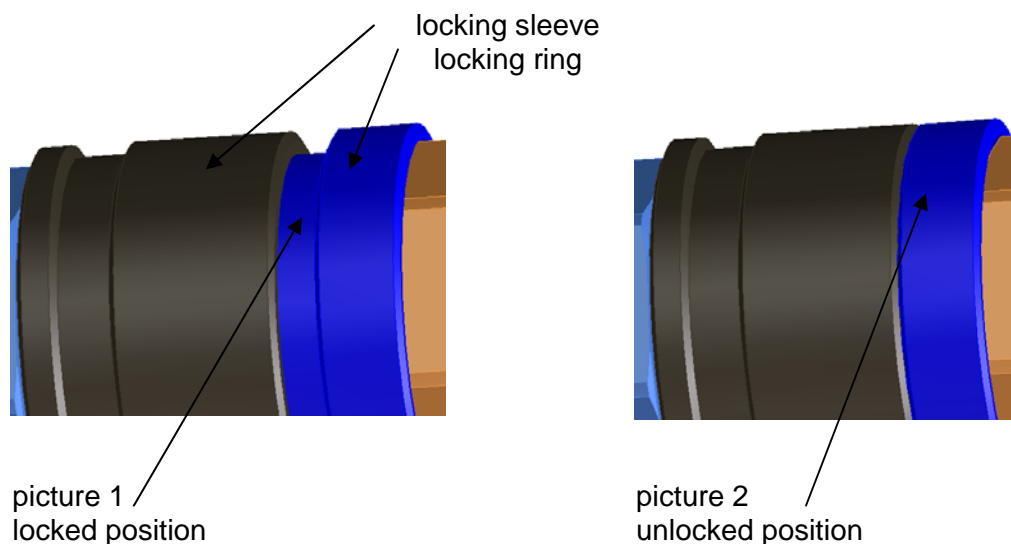
Operating Instruction

7.3 Safety locking device SI (supplementary equipment)

7.3.1 Coupling process

For coupling the locking ring must be in unsecured position (picture 2).

Coupling as described under 6.1.



After coupling the locking ring is drawn towards the hose, turned by 90° and released. Now the locking ring snaps forward into the safety position (picture 1).

Both final positions – secured and unsecured – are fixed by spring loaded cams.

The operator can assure himself of the proper locking and saving by trying, as a control, to disconnect the coupling by drawing back the locking sleeve. This is not possible in secured position.

7.3.2 Decoupling process

In coupled situation the locking ring is in secured position (picture 1).

For de-blocking the locking ring is drawn towards the hose, turned by 90° and released.

Now the locking ring snaps forward into the safety position (picture 1).

Both final positions – secured and unsecured – are fixed by spring loaded cams.

Decoupling as described under 6.2.

Maintenance and Functional Instruction

8 Maintenance Instruction

Preventive maintenance measures

WALTHER self sealing couplings are to be operated in such a manner that external damages to elements and all moving parts are avoided.

8.1 Maintenance and functional test

In order to always guarantee function of the self sealing coupling and hence safety of operator, a maintenance and functional testing must be made in appropriate periods of time depending on operating conditions.

In order to minimize operating forces and to extend service life of the self sealing coupling we recommend to slightly grease plug surfaces (see item 9.0).

8.1.1 Maintenance includes following items:

- A visual inspection of self sealing coupling and self sealing adaptor regarding damage and contamination has to be made.
- Dirt at the functional area (sealing area, operating elements) which is easily accessible from outside should be removed by simply wiping-off.

If there are damaged, torn or corroded parts, coupling must be dismantled and returned to manufacturer for repair.

If worn or embrittled seals are found or if there is extreme dirt, the customer can decide whether he returns coupling unit to the manufacturer's factory or whether he repairs himself.

8.1.2 Functional test includes following items:

As described in the operating instruction, coupling is several times connected, pressurized and then disconnected.

In doing so, the following has to be observed:

- Connection and disconnection process must be absolutely smooth.
- Coupling must be absolutely leak-proof in connected and disconnected state.

If there are damaged, torn or corroded parts, coupling must be dismantled and returned to manufacturer for repair.

If worn or embrittled seals are found or if there is extreme dirt, the customer can decide whether he returns the coupling unit to the manufacturer's factory or whether he repairs himself.

9 Lubrication !

In order to minimize operating forces and to extend service life of the coupling we recommend to slightly grease plug surfaces.

Lubrication is to be carried out with greases which **do not** tend to become resin.

Caution !

The selection of the grease is to be suited to the sealing quality and the medium (e.g.: oxygen) in view of the compatibility.

10 Storage

The couplings must be stored in such a way that no damages can occur at the couplings.

The storage conditions of the couplings must comply with the guidelines for the seals as these can change in properties due to improper storage.

The following items must be kept:

- The couplings must be stored dry.
- To safely conserve the seals and that means also the couplings they should not be stored under the effect of daylight.

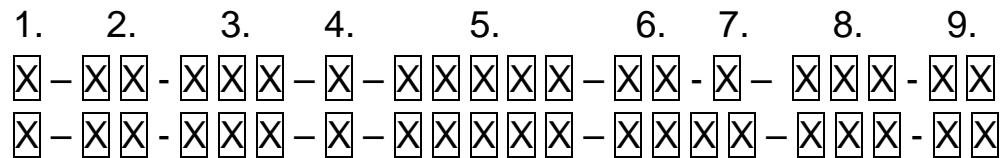
For protection against oxygen the seals and also the couplings shall be stored into the packing.

11 Shut-down

At the end of the service life the coupling or its components have to be disposed non-polluting and according to the legal regulations.

For that the local public or private disposal societies should be taken.

12 Order number code



1. Subject group
2. Series
The information regarding the series comprises either two letters or two numbers.
3. Nomial size / Nominal bore
It is rounded up or down to one. The information can be numerical as well as alphanumerical.
4. Product type or design type
5. Connection design
6. Material design:
xx-x and xxxx possible
7. Material design (seal design):
xx-x and xxxx possible
8. Y or Z design
9. Additional equipment

13 Index

<i>A</i>	
According to intended purpose.....	6
Acquired knowledge.....	4
Adaptorl.....	6
air.....	7
Alterations	4
Assembly	6
<i>C</i>	
Commissioning.....	4, 6
connection	7, 8
Connection process	12
coupling.....	4
Coupling.....	6, 8, 17
Couplings	6
Customer care.....	2
<i>D</i>	
Damage.....	4, 6
Damage compensation	4
daylight.....	16
Disconnection process	12
Disposal societies	17
dry.....	16
dust cap.....	7
dust plug	7
<i>E</i>	
Equipment	4
Experience	4
external damage.....	11
<i>F</i>	
Faults	4
Fluid	6
Function.....	6
Function test	6
Functionality.....	2
<i>G</i>	
General	4
guarantee	14
<i>H</i>	
Hazard notes.....	6
Hazardous emission.....	6
High Pressure Series.....	1
hydraulic oil.....	7
<i>I</i>	
Implementation	6
Improvement	4
Index.....	19
Inspection	2
Installation Instruction	11
<i>L</i>	
Legible condition	6
Liability	4
List of Contents	3
Lubrication	15
<i>M</i>	
Maintenance	2, 4, 6
Maintenance and functional test.....	14
Maintenance Instruction.....	14
Manual	4
Media temperatures.....	6
<i>O</i>	
Operating Instruction	1, 12
Operation.....	2
Operational safety ordinances	6
operator	6, 14
Operator	8
Operators.....	2
Order number code.....	18
original	4
<i>P</i>	
packing	16
particular	6
Perfect, functioning condition.....	6
Performance capability.....	2
Pressurized	6
Product description	7
Property	4
Protective gloves	6
<i>Q</i>	
quality.....	15
questions.....	4
<i>R</i>	
regulations.....	11
Regulations.....	4
Reliability.....	2

Repair work	6	<i>T</i>	
<i>S</i>		Technical equipment	2
Safety	2	Temperaturklasse	10
Safety devices	6	Thermally	6
Safety Instruction	6	thru type adaptor	7
Scope of delivery	4	thru type coupling	7
Screw connections	6	Tools	2, 6
self sealing adaptor	7, 11, 12, 14	Translation errors	4
self sealing coupling	7, 11, 12, 14	Types of use	8
Self sealing coupling	12	<i>U</i>	
Self Sealing Coupling	1	Use	2
service	14, 15	<i>V</i>	
Service	2	Version	4
Shut-down	17	<i>W</i>	
Special designs	4	Work safety regulations	6
Specialists	2	Working method	6
specification	8	Wrong product selection	6
Status of development	4		
Storage	16		
subspecies	7		
Systems	2, 6		