

Operating manual English

Revision	C
Date	07.07.2011
Created by	PPI / NH

This operating instruction is not subject to the updating

Low Pressure Clean-Break-Coupling

1-CT-005-0-.....-.....

1-CT-005-2-.....-.....

1-CT-007-0-.....-.....

1-CT-007-2-.....-.....

1-CT-009-0-.....-.....

1-CT-009-2-.....-.....

1-CT-012-0-.....-.....

1-CT-012-2-.....-.....

1-CT-019-0-.....-.....

1-CT-019-2-.....-.....

optional features:

EX, GG (only CT-019)



Vor Beginn aller Arbeiten
Betriebsanleitung lesen!

*Read operating instruction
before beginning of all works!*

Betriebsanleitung immer
AUFBEWAHREN!
griffbereit am Gerät

*Always **KEEP** operating
instruction! In a ready hand
way at the device*

Achtung: Vor Inbetriebnahme
Gerät auf mängelfreien Zustand
und technisch einwandfreie
Funktion kontrollieren.

*Caution: Before starting-up
check device on faultless
condition and technically
perfect function.*

Das Original ist die
deutsche Fassung

*The German version
is the original*

This coupling is a quality product, in which special attention has been paid to high functionality, ease of operation, safety and reliability. As an item of technical equipment this coupling is intended for use in the commercial, industrial area and for operators, who have been trained by specialists in the handling of technical systems / tools.

Customer care:

As part of our individual customer care we will be happy to assist you in questions relating to use and operation and on any problems encountered.

Service and maintenance:

In order to maintain the high technical performance capability and reliability of your coupling over many years, we recommend regular inspection and maintenance.

We can thereby offer you optimum support by our Customer Service department and the conclusion of a service and maintenance contract. Please ask for a quotation.

Carl Kurt Walther GmbH & Co. KG
PO Box 42 04 44
42781 Haan
Westfalenstraße 2

Tel.: +49 (0) 2129 567-0
Fax: +49 (0) 2129 567 450

E-Mail: info@walther-precision.de
Internet: www.walther-precision.de

Contact:

Application technology and service

Holger R. Figge
Telephone: (02129) 567-591
Telefax: (02129) 567-590
Handy: (0162) 2090100
e-mail: hfigge@walther-precision.de

Further addresses and telephone numbers of contacts can be found on the Internet on our homepage under www.walther-precision.de "Service / Customer service".-

Table of Contents

1	<u>Table of Contents</u>	
1	TABLE OF CONTENTS	3
2	GENERAL	4
3	WARRANTY	5
4	SAFETY INSTRUCTIONS	6
5	PRODUCT DESCRIPTION OF THE COUPLING	7
5.1	INTENDED USE	8
5.2	TECHNICAL DATA	8
5.3	OPTIONAL FEATURES	9
5.4	EXTENDED PRODUCT DESCRIPTION FOR APPLICATION ACC. TO ATEX-GUIDE LINE 94/9/EG (SPECIAL DESIGN EX):	9
5.4.1	General	9
5.4.2	Extended marking	9
6	INSTALLATION MANUAL	10
6.1	GENERAL	10
6.2	EXTENDED INSTALLATION INSTRUCTION FOR APPLICATION ACC. TO ATEX-GUIDELINE 94/9/EG	11
6.2.1	Details for safe operation	11
6.2.2	Details for safe installation	11
6.2.3	Details for a safe application area	11
7	OPERATING MANUAL	12
7.1	COUPLING PROCESS	12
7.2	UNCOUPLING PROCESS	12
8	MAINTENANCE AND FUNCTION TEST	13
8.1	MAINTENANCE AND FUNCTIONAL TEST	13
8.1.1	Maintenance includes following items:	13
8.1.2	Functional test includes following items:	13
9	TEST	14
10	LUBRICATION !	15
11	STORAGE	16
12	SHUT-DOWN	17
13	ORDER NUMBERS CODE	18
14	INDEX	19

2 General

This manual contains all regulations for operation, commissioning and maintenance of the coupling.

All information and notes in this operating manual were collated while taking into consideration the valid regulations, the current engineering related status of development as well as our many years of experience and acquired knowledge.

Translations of this operating manual were also produced according to the best of knowledge. However, we cannot assume liability for any translation errors.

The German version provided for this operating manual is considered the authoritative version.

The actual scope of delivery can deviate from the explanations and graphic representations described herein under certain circumstances, e.g. in the case of special designs, utilization of additional order options or because of state-of-the-art technical alterations.

If you have any questions, please contact the manufacturer.



This operating manual must be read carefully before starting work on or with the equipment, in particular before commissioning!

The manufacturer assumes no liability for damage or faults arising from non-compliance with the instructions in this operating manual.

The operating manual must be kept directly with the equipment and be accessible to all persons who work on or with the equipment.

It is not permitted for the operating manual to be passed to third parties and if applicable this will incur damage compensation.

All other rights reserved.

Before commissioning the device must be checked for being not defective and its technically perfect function.

The German version is the original.

We reserve the right to make technical alterations to the product within the context of improving the usage properties and further development.

The operating manual remains our property.

Any reproduction, use by or communication to third parties incurs a penalty and will be pursued by court action (copyright law against unfair competition, BGB [German Civil Code]).

All rights reserved in the case of a patent award (Paragraph 7, Section. 1 of the patent law - PG) or entry as a patented design (Paragraph 5, Section 4 of the patented design law - GMG).

3 Warranty

The warranty conforms to:

the regulations agreed in the purchase contract and
the "General Conditions for Delivery and Capacity" of C.K. Walther GmbH & Co. KG
of the state which was valid at the date of the purchase contract.

Wearing parts are generally excluded from the warranty.
Typical wearing parts of products from company C.K. Walther GmbH & Co. KG
are for example:

- seals
- springs

Safety instructions

4 Safety instructions

Using these couplings does not release the customer from his obligation to comply with the pertinent work safety regulations e.g. operational safety ordinances, etc. The duty to take due care by the operator of the couplings includes planning measures to ensure proper operation and monitoring their implementation.

Hazard notes

If the wrong product has been selected or if there is improper use or maintenance has been omitted, then hazards arise and personal injuries and material damage can occur from:

- Hazardous emission of fluid or individual particles/coupling parts
- Function impairments of connected systems or tools
- The metal parts of coupling and adaptor are not thermally protected. You can be burned if you touch these parts at high media temperatures. According to the ambient temperature valve lever and ring grip can also become unbearably hot. For that reason suitable, sufficiently long protective gloves should be worn.

The operator must in particular make sure that

- The couplings are only used according to the intended purpose.
- The couplings are only operated in a perfect, functioning condition.
- The operating manual is always in a legible condition and is available in its entirety to operating personnel.
- The operating personnel are sufficiently acquainted with the working method and the safety notes for the coupling.
- The coupling is sent to our factory for repair work.
- During operation of the coupling, no safety devices are removed and/or deactivated.
- Before installing or dismantling the coupling, you have made sure that the coupling has not been pressurized.

After completing assembly and installation work and before commissioning the coupling, observe the following points:

Check once again that all screw connections are securely fitted.

Before commissioning the coupling, a function test must be carried out (see maintenance and function test).

Product description of coupling

5 Product description of the coupling

Coupling connection consists of:

- self sealing coupling	1-CT-005-0-.....-.....
- self sealing adaptor	1-CT-005-2-.....-.....
- self sealing coupling	1-CT-007-0-.....-.....
- self sealing adaptor	1-CT-007-2-.....-.....
- self sealing coupling	1-CT-009-0-.....-.....
- self sealing adaptor	1-CT-009-2-.....-.....
- self sealing coupling	1-CT-012-0-.....-.....
- self sealing adaptor	1-CT-012-2-.....-.....
- self sealing coupling	1-CT-019-0-.....-.....
- self sealing adaptor	1-CT-019-2-.....-.....

In case that both coupling halves are not connected they should be protected against external dirt and/or damages if required.

For that purpose dust cap and dust plug are available.

Possible combinations :

self sealing coupling dust cap	1-CT-005-0 with 1-SK-028-9-17325-AAAA-T015
self sealing adaptor dust cap	1-CT-005-2 with 1-SL-014-9-17325-AAAA-T022
self sealing coupling dust cap	1-CT-007-0 with 1-SK-033-9-22328-AAAA-T017
self sealing adaptor dust cap	1-CT-007-2 with 1-SL-018-9-17325-AAAA-T028
self sealing coupling dust cap	1-CT-009-0 with 1-SK-035-9-24430-AAAA-T017
self sealing adaptor dust cap	1-CT-009-2 with 1-SL-020-9-24430-AAAA-T030
self sealing coupling dust cap	1-CT-012-0 with 1-SK-040-9-35442-AAAA-T017
self sealing adaptor dust cap	1-CT-012-2 with 1-SL-022-9-35442-AAAA-T030
self sealing coupling dust cap	1-CT-019-0 with 1-SK-058-9-47455-AAAA-T020
self sealing adaptor dust cap	1-CT-019-2 with 1-SL-035-9-44450-AAAA-T046

We recommend:

The self sealing adaptors should be rigidly mounted and the self sealing couplings should be used as free parts which protects the sealing faces.

Product description of coupling

5.1 Intended Use

- The Clean Break couplings of the CT series are our latest generation push to connect couplings for low pressure applications (up to 64 bar).
- The clean break coupling serves only to connect two lines.
- Connection under residual pressures.

Type	CT-005	CT-007	CT-009	CT-012	CT-019
can be connected under residual pressure	25 bar 362 psi	10 bar 145 psi	10 bar 145 psi	8 bar 116 psi	2 bar 29 psi

- The connection and disconnection process is carried out manually.
- The coupling has an automatic lock, i.e.

one-hand operation

- The connection and disconnection is performed without squirting medium.
- This series is suitable for all applications which demand minimal leakage, fool-proof handling and a high flow rate.
- For all other possible media Walther Präzision should be consulted.

5.2 Technical data

- Working pressures of coupling depend on materials of individual parts.
- When determining the working with standardized threaded connections, the highest permissible working pressure of the connection must be taken into account.
- When selecting a suitable connection the following static pressure is possible:

	Max. working pressure connected bar / psi	Max. working pressure disconnected bar / psi	Amount of Leakage (ml) bei 3,5 bar at 50 psi	Cv-value
CT-005	64 / 928	30 / 435	0,1	0,8
CT-007	64 / 928	30 / 435	0,1	1,85
CT-009	64 / 928	30 / 435	0,1	2,75
CT-012	64 / 928	30 / 435	0,15	4,5
CT-019	40 / 580	30 / 435	0,3	9,8

- The coupling is not determined for any types of use and technical values other than those listed here.
- Safe operation is not guaranteed if the coupling is used contrary to its intended use and technical values
- The operator of the coupling is responsible for all personal injuries or material damage that occur from non-intended use and disregard of the technical values; the manufacturer assumes no responsibility in these cases.

Product description of coupling

5.3 Optional Features

GG = with ring grips (aluminium cast)
only **CT-019** (z.B.: 1-CT-019-0-.....-...-GG)



EX = ATEX – version

5.4 Extended product description for application acc. to ATEX-guide line 94/9/EG (special design EX):

5.4.1 General

Only non-sparkling materials may be used.
Non-sparkling materials are 1.4305 or equivalent materials.
Furthermore brass with different surfaces (f. ex. chrome-plated, nickel-plated).

Further on it must be assured that the seal is resistant against and suitable for the flowing through media. Also the temperature resistance of the seals must be guaranteed. This must also be considered for the marking acc. to chapter 5.4.2.

5.4.2 Extended marking

The coupling fittings are marked with



As the surface temperature of the self-sealing couplings are determined by the temperature of the fluids, the temperature category or the highest surface temperature must be specified by the operator while the safe temperature distances acc. to EN 13463-1 must be observed and the maximum temperature resistance of the coupling materials and seals are taken into consideration.

The marking of the temperature class must be effected readily visible by the operator.

The determination of the temperature class must be made acc. to the following table:

Max. temperature of fluids	Temperature class
75	T6
90	T5
130	T4
195	T3
295	T2
445	T1

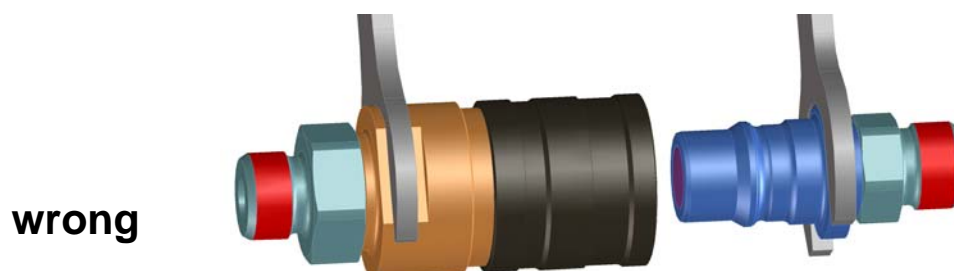
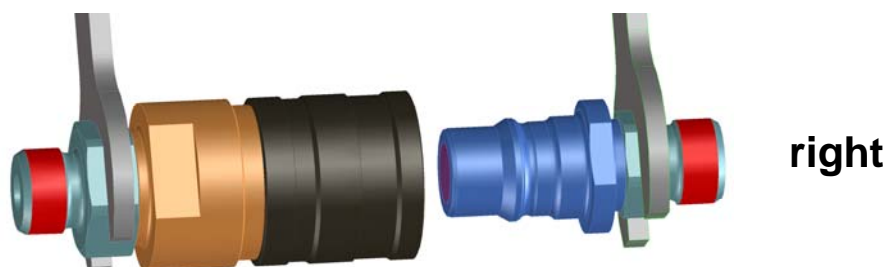
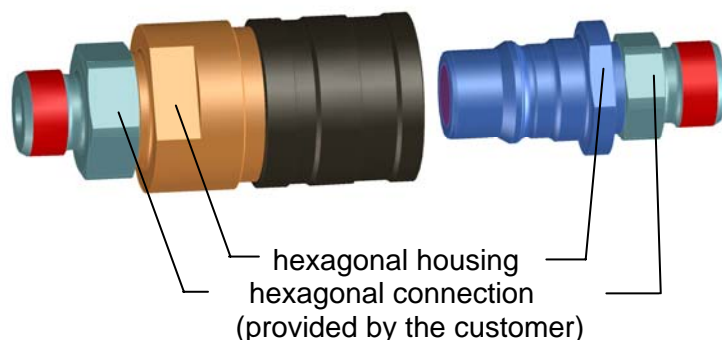
The couplings are not admitted for the temperature classes T1 and T2 and may not be marked for that by the operator.

6 Installation manual

6.1 General

Install the self sealing coupling into the network in due consideration of the general accident prevention regulations, so that:

- an error-free operation according to the operating instructions is guaranteed. Please make sure that you use only the hexagon on the connection which is provided by the customer to tighten or release the coupling / adaptor when assembling or dismantling it (see picture).



- the screw connection on the connection side (provided by the customer) is made according to the relevant technical regulations.
- the self sealing coupling is predominantly used on the network side and the self sealing coupling is mainly used on the consumer side.
- exterior damage to the unit and to all movable parts is ruled out.

Before installing the through type coupling and the adaptor to the piping system, make sure that the piping system has been sufficiently flushed/blown or cleaned.



After completing the installation work, perform a function test both depressurised and under working pressure, as described in the operating instructions.

6.2 Extended installation instruction for application acc. to ATEX-guideline 94/9/EG

6.2.1 Details for safe operation

For the use of self sealing couplings as a hose connection it must be guaranteed that in case of pressure strikes the tumbling of the self sealing coupling can be avoided by fixing at suitable constructions. In principle it must be observed that the self sealing coupling cannot strike on hard objects which could produce strike sparks when touching the housing.

6.2.2 Details for safe installation

The self sealing couplings may only be connected to pipe- and hose systems which are suitable for electrostatic discharge and which are connected to the ground potential.

6.2.3 Details for a safe application area

The self sealing couplings may be used according to the class of devices² in areas susceptible to explosions where potentially explosive mixtures of gas, steam, mist and air are available.

7 Operating manual

The self sealing coupling elements may only be used for the operating conditions specified under item 5 (product description) in order to avoid critical injury to personnel and damage to the self sealing coupling elements during operation.

7.1 Coupling process

Before each coupling process a visible check of the coupling and the adaptor has to be made. Damaged parts must be changed in case of observable, visible damages or deformations.

The self-sealing coupling is equipped with an automatic lock, i. e. one-hand operation. For coupling the self-sealing coupling behind the locking sleeve or the self-sealing adaptor in the end plug area is taken up with one hand and pushed axially centred on the counter piece until the end stop.

During the coupling the locking sleeve snaps in forward without the aid of the operator.

Now the self-sealing coupling and the self-sealing adaptor are locked mechanically. Available valves are opened during the coupling process and thus the passage is released.



CAUTION

Please take care that locking sleeve is in final position, i.e. that it is flush in front with the coupling housing as otherwise no perfect lock is guaranteed.

7.2 Uncoupling process

For decoupling the self sealing coupling behind the locking sleeve is taken up with one hand and the locking sleeve is pulled back with the other hand and thus the connection is separated.

Nach dem Trennen der Verbindung rutscht die Verriegelungshülse in ihre Ausgangsposition für das erneute Kuppeln. Diese Position ist im gekuppelten und entkuppelten Zustand gleich.

During the decoupling the available valves close automatically so that no further discharge of media is possible.

Caution!

In case of an available pressure in the line connected by the coupling system a strong separation impulse - depending on the pressure - can be effective onto the coupling system during disconnection. For that reason the movable part of the coupling (free half) is to be firmly held in the hand to avoid injuries.

Maintenance and function test

8 Maintenance and function test

Preventive maintenance measures

WALTHER self sealing couplings are to be operated in such a manner that external damages to elements and all moving parts are avoided.

8.1 Maintenance and functional test

In order to always guarantee function of the self sealing coupling and hence safety of operator, a maintenance and functional testing must be made in appropriate periods of time depending on operating conditions.

In order to minimize operating forces and to extend service life of the self sealing coupling we recommend to slightly grease plug surfaces (see item 10.0).

8.1.1 Maintenance includes following items:

- A visual inspection of self sealing coupling and self sealing adaptor regarding damage and contamination has to be made.
- Dirt at the functional area (sealing area, operating elements) which is easily accessible from outside should be removed by simply wiping-off.

If there are damaged, torn or corroded parts, coupling must be dismantled and returned to manufacturer for repair.

If worn or embrittled seals are found or if there is extreme dirt, the customer can decide whether he returns coupling unit to the manufacturer's factory or whether he repairs himself.

8.1.2 Functional test includes following items:

As described in the operating instruction, coupling is several times connected, pressurized and then disconnected.

In doing so, the following has to be observed:

- Connection and disconnection process must be absolutely smooth.
- Coupling must be absolutely leak-proof in connected and disconnected state.

If there are damaged, torn or corroded parts, coupling must be dismantled and returned to manufacturer for repair.

If worn or embrittled seals are found or if there is extreme dirt, the customer can decide whether he returns the coupling unit to the manufacturer's factory or whether he repairs himself.

Please note !

If the coupling is repaired by the customer themselves, a pressure and/or leak test must be performed in any case.

The sequence and extent of this test is described in section "Test".

Please note !

The manufacturer's warranty shall not apply to the end product if it is repaired by other than the manufacturer, Walther-Präzision.

9 Test

(Extract from the test instructions QM-PA 2.0 of the Walther-Präzision QM system)

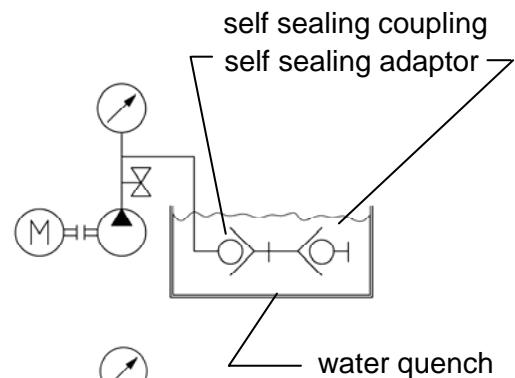
Description:

The coupling is tested by means of an immersion test according to the following values.

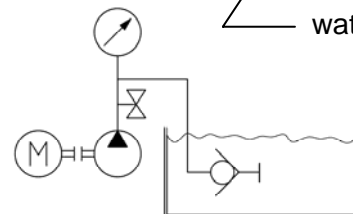
Series low pressure	
CT-005	2 bar absolut
CT-007	2 bar absolut
CT-009	2 bar absolut
CT-012	2 bar absolut
CT-019	2 bar absolut

- Test setup and test procedure

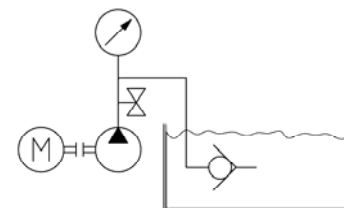
Test 1: self sealing coupling and
self sealing adaptor connected



Test 2: self sealing adaptor disconnected



Test 3: self sealing adaptor disconnected



- Notes and remarks:

The dwell time per test is 10 seconds.

There must not be any bubbles during the 10 seconds dwell time.

After testing the coupling must be dried with hot air as soon as possible

(recommended: 45 – 55 °C, approx. 30 min with air stream, up to 2 hours with stagnant air, depending on the device).

- Documentation:

Please document the test pressure, test medium and name/date of each test.

10 Lubrication !

In order to minimize operating forces and to extend service life of the coupling we recommend to slightly grease plug surfaces.

Lubrication is to be carried out with greases which **do not** tend to become resin.



Caution !

The selection of the grease is to be suited to the sealing quality and the medium (e.g.: oxygen) in view of the compatibility.

11 Storage

The couplings must be stored in such a way that no damages can occur at the couplings.

The storage conditions of the couplings must comply with the guidelines for the seals as these can change in properties due to improper storage.

The following items must be kept:

- The couplings must be stored dry.
- To safely conserve the seals and that means also the couplings they should not be stored under the effect of daylight.
- For protection against oxygen the seals and also the couplings shall be stored into the packing.

12 Shut-down

At the end of the service life the coupling or its components have to be disposed non-polluting and according to the legal regulations.

For that the local public or private disposal societies should be taken.

Order numbers code

13 Order numbers code

1. 2. 3. 4. 5. 6. 7. 8. 9.
 X - XX - XXX - X - XXXXX - XX - X - XXX - XX
 X - XX - XXX - X - XXXXX - XXXXX - XXXX - XX

1. Subject group
2. Series
Series description consists of either two letters or two digits.
3. Nominal size / nominal width
It is rounded up or rounded down to full units.
The indication can be numerical or alphanumeric.
4. Type of product and design
5. Type of connection
6. Material:
xx-x and xxxx possible
7. Material (seal version):
xx-x and xxxx possible
8. Y- or Z-design
9. Optional features

14 Index

A	
According to intended purpose	6
Acquired knowledge	4
Adaptorl	6
Alterations.....	4
Assembly	6
C	
Commissioning	4, 6
connected	7
connection	7, 18
coupling	2
Coupling.....	6, 8, 12, 17
Couplings	6
<u>Customer care</u>	2
D	
Damage	4, 6
Damage compensation	4
daylight	16
Disposal societies.....	17
Disregard.....	8
dry	16
dust cap	7
dust plug.....	7
E	
Equipment.....	4
Experience.....	4
F	
Faults.....	4
Fluid.....	6
Function	6
Function test.....	6
Functionality	2
G	
General.....	4
guarantee	13
H	
Hazard notes.....	6
Hazardous emission	6
I	
Implementation	6
Improvement.....	4
Inspection.....	2
Installation manual.....	10
L	
Legible condition	6
Liability.....	4
Lubrication	15
M	
<u>Maintenance</u>	2, 4, 6, 13
Maintenance and function test.....	13
Maintenance and functional test.....	13
Manual	4
Media temperatures.....	6
O	
one-hand operation	12
Operating manual	1
Operation.....	2
Operational safety ordinances	6
operator	6, 13
Operators.....	2
original	4
P	
packing	16
particular	6
Perfect, functioning condition	6
Performance capability.....	2
Pressurized	6
Product description	7
Property	4
Protective gloves	6
Q	
quality	15
R	
Regulations	4
Reliability.....	2
<u>remarks</u>	14
Repair work.....	6
responsible	8
S	
Safety	2
Safety devices	6
Scope of delivery	4
Screw connections.....	6
self sealing adaptor.....	7, 13
self sealing coupling.....	7, 13
service	13, 15
<u>Service</u>	2
Shut-down	17
Special designs	4
Specialists	2
Status of development.....	4
Storage	16
Systems	2, 6

T

Table of Contents	3
Technical data	8
Technical equipment	2
Technical values	8
Temperaturklasse	9
Test	14
Thermally	6
Tools	2, 6
Translation errors	4
Types of use	8

U

Use	2
-----------	---

V

Version	4
---------------	---

W

Work safety regulations	6
Working method	6
<u>working pressure</u>	8
Wrong product selection	6