

## Operating Instruction English

Revision	B
Datum	25.09.2008
Ersteller	NH

Die Betriebsanleitung unterliegt nicht dem Änderungsdienst.

## Self Sealing Coupling High Pressure Series n.b. 3

02-003

Vor Beginn aller Arbeiten  
Betriebsanleitung lesen!

*Read operating instruction  
before beginning of all works!*

Betriebsanleitung immer  
**AUFBEWAHREN!**  
griffbereit am Gerät

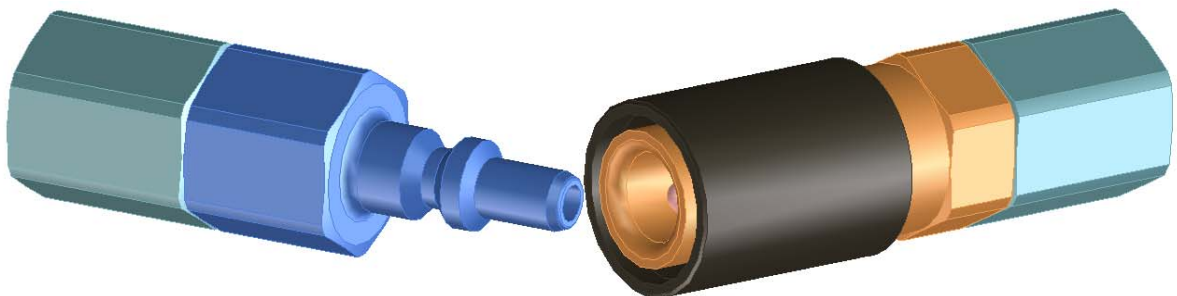
*Always KEEP operating  
instruction! In a ready hand  
way at the device*

**Achtung:** Vor Inbetriebnahme  
Gerät auf mängelfreien Zustand  
und technisch einwandfreie  
Funktion kontrollieren.

*Caution: Before starting-up  
check device on faultless  
condition and technically  
perfect function.*

Das Original ist die  
deutsche Fassung

*The German version  
is the original*



This coupling is a quality product, in which special attention has been paid to high functionality, ease of operation, safety and reliability. As an item of technical equipment this coupling is intended for use in the commercial, industrial area and for operators, who have been trained by specialists in the handling of technical systems / tools.

**Customer care:**

As part of our individual customer care we will be happy to assist you in questions relating to use and operation and on any problems encountered.

**Service and maintenance:**

In order to maintain the high technical performance capability and reliability of your docking system over many years, we recommend regular inspection and maintenance.

We can thereby offer you optimum support by our Customer Service department and the conclusion of a service and maintenance contract.  
Please ask for a quotation.

Carl Kurt Walther GmbH & Co. KG  
PO Box 42 04 44  
42781 Haan  
Westfalenstraße 2  
Tel.: +49 (0) 2129 567-0  
Fax: +49 (0) 2129 567 450  
E-Mail: [info@walther-praezision.de](mailto:info@walther-praezision.de)  
Internet: [www.walther-praezision.de](http://www.walther-praezision.de)

**Contact:**

**Application technology and service**

Holger R. Figge  
Telephone: (02129) 567-591  
Telefax: (02129) 567-590  
Handy: (0162) 2090100  
e-mail: [hfigge@walther-praezision.de](mailto:hfigge@walther-praezision.de)

Further addresses and telephone numbers of contacts can be found on the Internet on our homepage under [www.walther-praezision.de](http://www.walther-praezision.de) "Service / Customer service".

## List of Contents

---

<b>1</b>	<b><u>List of Contents</u></b>	
<b>1</b>	<b>LIST OF CONTENTS .....</b>	<b>3</b>
<b>2</b>	<b>GENERAL.....</b>	<b>4</b>
<b>3</b>	<b>SAFETY INSTRUCTION.....</b>	<b>5</b>
<b>4</b>	<b>WARRANTY.....</b>	<b>6</b>
<b>5</b>	<b>PRODUCT DESCRIPTION OF THE SELF SEALING COUPLING .....</b>	<b>7</b>
5.1	USAGE ACCORDING TO SPECIFICATION.....	7
5.2	TECHNICAL DATA .....	8
<b>6</b>	<b>INSTALLATION INSTRUCTION.....</b>	<b>9</b>
<b>7</b>	<b>OPERATING INSTRUCTION.....</b>	<b>10</b>
7.1	CONNECTION PROCESS .....	10
7.2	DISCONNECTION PROCESS .....	10
<b>8</b>	<b>MAINTENANCE INSTRUCTION.....</b>	<b>11</b>
8.1	MAINTENANCE AND FUNCTIONAL TEST .....	11
8.1.1	<i>Maintenance includes following items: .....</i>	<i>11</i>
8.1.2	<i>Functional test includes following items:.....</i>	<i>11</i>
<b>9</b>	<b>LUBRICATION !.....</b>	<b>12</b>
<b>10</b>	<b>STORAGE.....</b>	<b>13</b>
<b>11</b>	<b>SHUT-DOWN .....</b>	<b>14</b>
<b>12</b>	<b>ORDER NUMBER CODE.....</b>	<b>15</b>
<b>13</b>	<b>INDEX .....</b>	<b>16</b>

## 2 General

This manual contains all regulations for operation, commissioning and maintenance of the coupling 02-003.

All information and notes in this operating manual were collated while taking into consideration the valid regulations, the current engineering related status of development as well as our many years of experience and acquired knowledge.

Translations of this operating manual were also produced according to the best of knowledge. However, we cannot assume liability for any translation errors. The German version provided for this operating manual is considered the authoritative version.

The actual scope of delivery can deviate from the explanations and graphic representations described herein under certain circumstances, e.g. in the case of special designs, utilization of additional order options or because of state-of-the-art technical alterations.

If you have any questions, please contact the manufacturer.



This operating manual must be read carefully before starting work on or with the equipment, in particular before commissioning!

The manufacturer assumes no liability for damage or faults arising from non-compliance with the instructions in this operating manual.

The operating manual must be kept directly with the equipment and be accessible to all persons who work on or with the equipment.

It is not permitted for the operating manual to be passed to third parties and if applicable this will incur damage compensation.

All other rights reserved.

Before commissioning the device must be checked for being not defective and its technically perfect function.

The German version is the original.

We reserve the right to make technical alterations to the product within the context of improving the usage properties and further development.

The operating manual remains our property.

Any reproduction, use by or communication to third parties incurs a penalty and will be pursued by court action (copyright law against unfair competition, BGB [German Civil Code]).

All rights reserved in the case of a patent award (Paragraph 7, Section. 1 of the patent law - PG) or entry as a patented design (Paragraph 5, Section 4 of the patented design law - GMG).

## Safety Instruction

---

### 3 Safety Instruction

Using these couplings does not release the customer from his obligation to comply with the pertinent work safety regulations e.g. operational safety ordinances, etc. The duty to take due care by the operator of the couplings includes planning measures to ensure proper operation and monitoring their implementation.


 Hazard notes

If the wrong product has been selected or if there is improper use or maintenance has been omitted, then hazards arise and personal injuries and material damage can occur from:

- Hazardous emission of fluid or individual particles/coupling parts
- Function impairments of connected systems or tools
- The metal parts of coupling and adaptor are not thermally protected. You can be burned if you touch these parts at high media temperatures. According to the ambient temperature valve lever and ring grip can also become unbearably hot. For that reason suitable, sufficiently long protective gloves should be worn.

 The operator must in particular make sure that

- The couplings are only used according to the intended purpose.
- The couplings are only operated in a perfect, functioning condition.
- The operating manual is always in a legible condition and is available in its entirety to operating personnel.
- The operating personnel are sufficiently acquainted with the working method and the safety notes for the coupling.
- The coupling is sent to our factory for repair work.
- During operation of the coupling, no safety devices are removed and/or deactivated.
- Before installing or dismantling the coupling, you have made sure that the coupling has not been pressurized.

 After completing assembly and installation work and before commissioning the coupling, observe the following points:

Check once again that all screw connections are securely fitted.

Before commissioning the coupling, a function test must be carried out (see maintenance and function test).

#### **4 Warranty**

The warranty conforms to:

the regulations agreed in the purchase contract and  
the “General Conditions for Delivery and Capacity” of C.K. Walther GmbH & Co. KG  
of the state which was valid at the date of the purchase contract.

Wearing parts are generally excluded from the warranty.  
Typical wearing parts of products from company C.K. Walther GmbH & Co. KG  
are for example:

- seals
- springs

## Product description of the coupling

---

### 5 Product description of the self sealing coupling

- Coupling connection consists of:
  - self sealing coupling      1-02-003-0
  - self sealing adaptor      1-02-003-2
  
- The following combination of the coupling connections is also possible:
  - thru type coupling      1-02-003-4
  - thru type adaptor      1-02-003-1
  - A one side self sealing variant is **not** possible.

In case that both coupling halves are not connected they should be protected against external dirt and/or damages if required.

- For that purpose dust cap and dust plug are available.  
Possible combinations :

self sealing coupling	1-02-003-0
or	
thru type coupling	1-02-003-4
with	
dust plug	1-02-003-6
self sealing adaptor	1-02-003-2
or	
thru type adaptor	1-02-003-1
with	
dust cap	1-02-003-5

#### 5.1 Usage according to specification

- Coupling is only used as connection of two lines.
- Connection and disconnection process is carried out by hand.
- Coupling is especially suitable for the following media/applications:
  - air
  - hydraulic oil
  - and their subspecies  
(such as oxygen or oil with additives)
  
- For all other possible applications, C.K. Walther should be consulted.

## Product description of the coupling

---

### 5.2 Technical Data

- Working pressures of the coupling depend on materials of individual parts.
- When determining working pressure of the coupling the max. permissible working pressure of the end connection is to be taken into account if standardized threads are used.

### Working pressure

<b>steel (11):</b>			
connected:	500 bar		
disconnected:	adaptor side	=	500 bar
	coupling side	=	500 bar

### Cv flow coefficient

both sides self sealing = 0.10

- The coupling is not determined for any types of use other than those listed here.
- Safe operation is not guaranteed if the coupling is used contrary to its intended use.
- The operator of the coupling is responsible for all personal injuries or material damage that occur from non-intended use and disregard of the technical values; the manufacturer assumes no responsibility in these cases.

## Installation instruction

---

### 6 Installation Instruction

Subject to the general accident prevention regulations coupling is to be installed into a network in such a way that:

- a satisfactory operation is guaranteed according to the operating instruction .
- first of all self sealing coupling is used on line side and self sealing adaptor on consumer side.
- external damage of the unit as well as all moving parts are excluded .

Before self sealing coupling and the self sealing adaptor are installed at a pipeline network make sure that the pipeline network is sufficiently rinsed/blown out and/or cleaned.



**After the assembly works are finished a functional test is to be carried out with both, without pressure and under working pressure according to operating instruction.**

## Operating Instruction

---

### 7 Operating Instruction

In order to avoid critical injuries of the staff and damage at the self sealing coupling during operation, coupling may be only used for the stated applications.

#### 7.1 Connection process

Before every couple cycle a visual check of coupling and adaptor is to be carried out. In case of recognizable, visible damage or deformations damaged parts are to be exchanged.

Hold self sealing coupling firmly in one hand; with the other hand pull back locking sleeve. This has to be done against locking spring resistance.

Push coupling (free half) with withdrawn locking sleeve axially centered onto plug part of adaptor (fixed half) until sensible resistance.

Bring locking sleeve with support of locking spring into starting position.

Self sealing coupling and self sealing adaptor are now mechanically locked.

#### **CAUTION**



Please take care that locking sleeve is in final position, i.e. that it is flush in front with the coupling housing as otherwise no perfect lock is guaranteed.

#### 7.2 Disconnection process

Withdraw locking sleeve against locking spring and take out coupling from self sealing adaptor.

#### **Caution!**

In case of an available pressure in the line connected by the coupling system a strong separation impulse - depending on the pressure - can be effective onto the coupling system during disconnection. For that reason the movable part of the coupling (free half) is to be firmly held in the hand to avoid injuries.

## Maintenance and Functional Instruction

---

### **8 Maintenance Instruction**

#### Preventive maintenance measures

WALTHER self sealing couplings are to be operated in such a manner that external damages to elements and all moving parts are avoided.

#### **8.1 Maintenance and functional test**

In order to always guarantee function of the self sealing coupling and hence safety of operator, a maintenance and functional testing must be made in appropriate periods of time depending on operating conditions.

In order to minimize operating forces and to extend service life of the self sealing coupling we recommend to slightly grease plug surfaces (see item 9.0).

##### 8.1.1 Maintenance includes following items:

- A visual inspection of self sealing coupling and self sealing adaptor regarding damage and contamination has to be made.
- Dirt at the functional area (sealing area, operating elements) which is easily accessible from outside should be removed by simply wiping-off.

If there are damaged, torn or corroded parts, coupling must be dismantled and returned to manufacturer for repair.

If worn or embrittled seals are found or if there is extreme dirt, the customer can decide whether he returns coupling unit to the manufacturer's factory or whether he repairs himself.

##### 8.1.2 Functional test includes following items:

As described in the operating instruction, coupling is several times connected, pressurized and then disconnected.

##### In doing so, the following has to be observed:

- Connection and disconnection process must be absolutely smooth.
- Coupling must be absolutely leak-proof in connected and disconnected state.

If there are damaged, torn or corroded parts, coupling must be dismantled and returned to manufacturer for repair.

If worn or embrittled seals are found or if there is extreme dirt, the customer can decide whether he returns the coupling unit to the manufacturer's factory or whether he repairs himself.

### 9 Lubrication !

In order to minimize operating forces and to extend service life of the coupling we recommend to slightly grease plug surfaces.

Lubrication is to be carried out with greases which **do not** tend to become resin.

#### Caution !

The selection of the grease is to be suited to the sealing quality and the medium (e.g.: oxygen) in view of the compatibility.

### **10 Storage**

The couplings must be stored in such a way that no damages can occur at the couplings.

The storage conditions of the couplings must comply with the guidelines for the seals as these can change in properties due to improper storage.

The following items must be kept:

- The couplings must be stored dry.
- To safely conserve the seals and that means also the couplings they should not be stored under the effect of daylight.

For protection against oxygen the seals and also the couplings shall be stored into the packing.

### 11 Shut-down

At the end of the service life the coupling or its components have to be disposed non-polluting and according to the legal regulations.

For that the local public or private disposal societies should be taken.

**12 Order number code**

1.	2.	3.	4.	5.	6.	7.	8.	9.
□	□□	□□□	□	□□□□□	□□	□	□□□	□□
□	□□	□□□	□	□□□□□	□□□□	□	□□□	□□

1. Subject group
2. Series  
The information regarding the series comprises either two letters or two numbers.
3. Nomial size / Nominal bore  
It is rounded up or down to one. The information can be numerical as well as alphanumerical.
4. Product type or design type
5. Connection design
6. Material design:  
xx-x and xxxx possible
7. Material design (seal design):  
xx-x and xxxx possible
8. Y or Z design
9. Additional equipment

## 13 Index

<i>A</i>	
According to intended purpose.....	5
Acquired knowledge.....	4
Adaptorl.....	5
air.....	7
Alterations .....	4
Assembly .....	5
<i>B</i>	
Betriebsanleitung.....	1
<i>C</i>	
Commissioning.....	4, 5
connection .....	7, 8
Connection process .....	10
coupling.....	4
Coupling.....	5, 8, 14
Couplings .....	5
Customer care.....	2
Cv flow coefficient.....	8
<i>D</i>	
Damage.....	4, 5
Damage compensation .....	4
daylight.....	13
Disconnection process.....	10
Disposal societies .....	14
dry.....	13
dust cap.....	7
dust plug.....	7
<i>E</i>	
Equipment .....	4
Experience.....	4
external damage.....	9
<i>F</i>	
Faults .....	4
Fluid .....	5
Function.....	5
Function test .....	5
Functionality.....	2
<i>G</i>	
General .....	4
guarantee .....	11
<i>H</i>	
Hazard notes.....	5
Hazardous emission .....	5
High Pressure Series .....	1
hydraulic oil .....	7
<i>I</i>	
Implementation .....	5
Improvement .....	4
Index.....	16
Inspection.....	2
Installation Instruction .....	9
<i>L</i>	
Legible condition .....	5
Liability.....	4
List of Contents .....	3
Lubrication.....	12
<i>M</i>	
Maintenance.....	2, 4, 5
Maintenance and functional test.....	11
Maintenance Instruction.....	11
Manual .....	4
Media temperatures.....	5
<i>O</i>	
Operating Instruction .....	1, 10
Operation.....	2
Operational safety ordinances .....	5
operator .....	5, 11
Operator .....	8
Operators.....	2
Order number code.....	15
original .....	4
<i>P</i>	
packing .....	13
particular .....	5
Perfect, functioning condition.....	5
Performance capability.....	2
Pressurized .....	5
Product description .....	7
Property .....	4
Protective gloves .....	5
<i>Q</i>	
quality.....	12

---

questions.....	4	subspecies.....	7
<i>R</i>		Systems .....	2, 5
regulations .....	9	<i>T</i>	
Regulations.....	4	Technical equipment.....	2
Reliability .....	2	Thermally .....	5
Repair work .....	5	thru type adaptor .....	7
<i>S</i>		thru type coupling .....	7
Safety.....	2	Tools .....	2, 5
Safety devices.....	5	Translation errors .....	4
Safety Instruction .....	5	Types of use .....	8
Scope of delivery.....	4	<i>U</i>	
Screw connections.....	5	Use .....	2
self sealing adaptor.....	7, 9, 10, 11	<i>V</i>	
self sealing coupling.....	7, 9, 10, 11	Version .....	4
Self sealing coupling .....	10	<i>W</i>	
Self Sealing Coupling.....	1	Warranty.....	6
service.....	11, 12	Work safety regulations .....	5
Service.....	2	Working method .....	5
Shut-down .....	14	Working pressure .....	8
Special designs .....	4	Wrong product selection .....	5
Specialists.....	2		
specification .....	8		
Status of development .....	4		
Storage.....	13		